



Downtown Adjacent Freestanding Office For Lease

Nathan Pellow

Senior Executive Vice President
Lic. No. 01214721
+1 213 532 3213
nathan.pellow@colliers.com

Nick Nybakken

Senior Associate
Lic. No. 01988629
+1 213 861 3352
nick.nybakken@colliers.com

www.pellowofficeteam.com

Colliers
865 S. Figueroa St, Suite 3500
Los Angeles, CA 90017
P: +1 213 627 1214
colliers.com

1533 Wilshire Blvd Los Angeles, CA



Floor
1st + 2nd



Lease Rate
\$3.00 PSF MG



Available SF
7,472



Availability
30-60 Days
From Lease Signing



Term
3-5 Years



Parking
7 Single 10-12 Stacked
(with abundant adjacent lots & structures)

Copyright © 2021 Colliers International. Information herein has been obtained from sources deemed reliable, however its accuracy cannot be guaranteed. The user is required to conduct their own due diligence and verification.

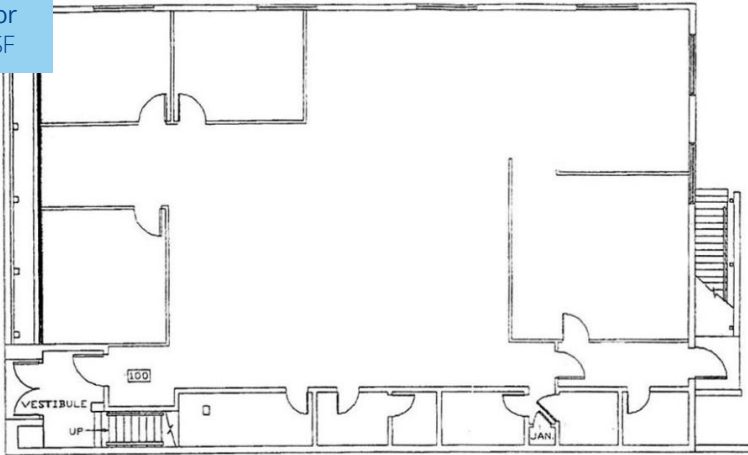
For Lease

Highlights

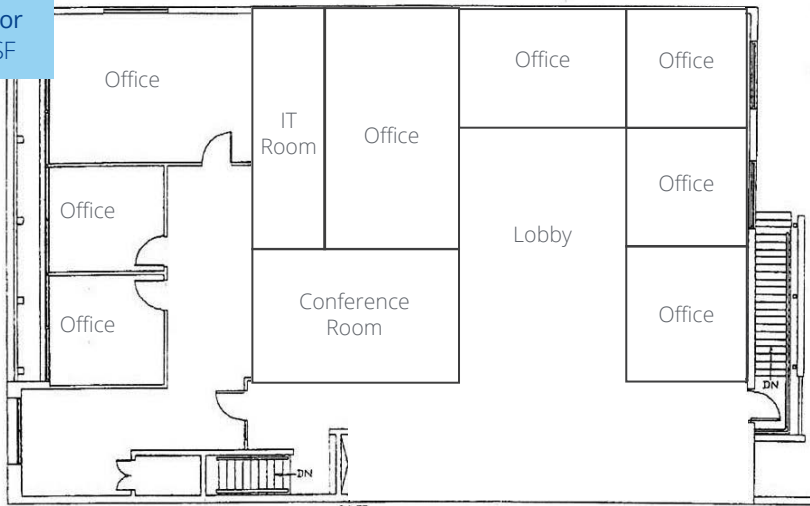
- » Unique freestanding DTLA adjacent building
- » Highly improved executive offices
- » Surrounded by new residential/mixed-use projects
- » Efficient layout designed for a wide variety of uses
- » Secured gated parking
- » Exposure on Wilshire - Sign Potential
- » 1 block from Starbucks and other food amenities
- » 1/2 mile from DTLA amenities
- » Easy freeway access to 110, 101, and 10 freeway

Floor Plan

1st Floor
3,736 SF



2nd Floor
3,736 SF



Contact us:

Nathan Pellow

Senior Executive Vice President
Lic. No. 01214721
+1 213 532 3213
nathan.pellow@colliers.com

Nick Nybakken

Senior Associate
Lic. No. 01988629
+1 213 861 3352
nick.nybakken@colliers.com

www.pellowofficeteam.com

Colliers
865 S. Figueroa St, Suite 3500
Los Angeles, CA 90017
P: +1 213 627 1214
colliers.com

1st Floor

Interior Photos

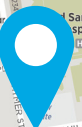
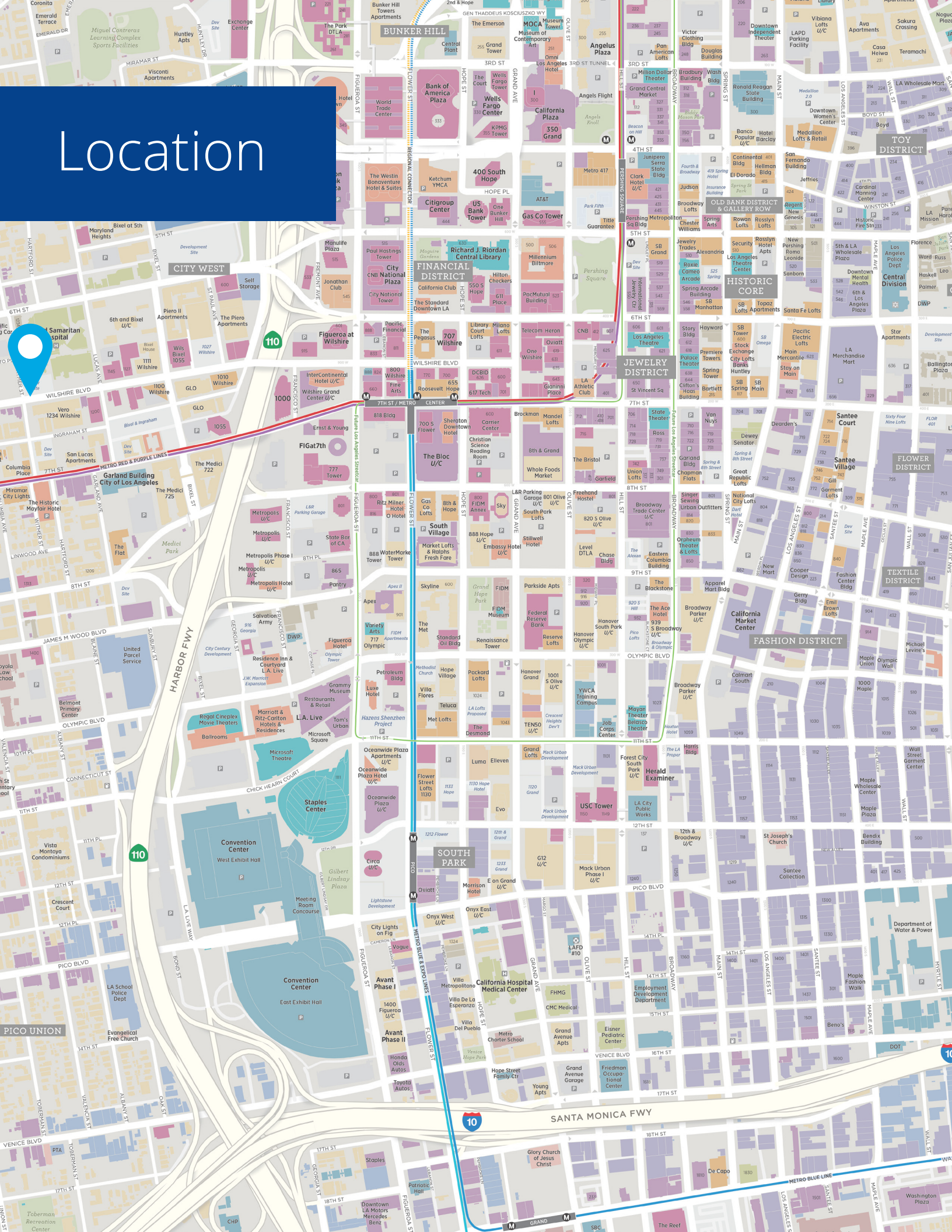


2nd Floor

Interior Photos



Location



Samaritan
Hospital