

**\$1 PSF
BROKER BONUS**

Colliers
INTERNATIONAL



PRICE REDUCED TO \$3.50 PSF

FOR SUBLEASE >>

9100 WILSHIRE BLVD BEVERLY HILLS, CA

SUITE | 100W

AVAILABLE SF | 10,099 SF

TERM | Through July 31, 2023

LEASE RATE | \$3.50 PSF

AVAILABILITY | Immediate

PARKING | 32 spaces

FURNITURE | Negotiable

HIGHLIGHTS:

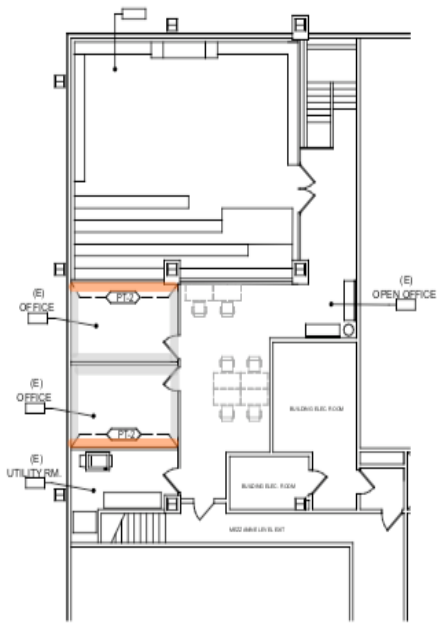
- > High ceilings
- > Private VIP Entrance
- > Ground floor with private double door entry
- > Very efficient floor plan with combo of offices and open space
- > Interior stairwell to an incredible 2nd floor conference/ breakout room
- > Close proximity to retail shops and fine dining in Beverly Hills
- > On-site gym and cafe
- > 24-hour on-site security personnel

NATHAN PELLOW | Executive Vice President | License No. 01215721 | 213 532 3213 | nathan.pellow@colliers.com

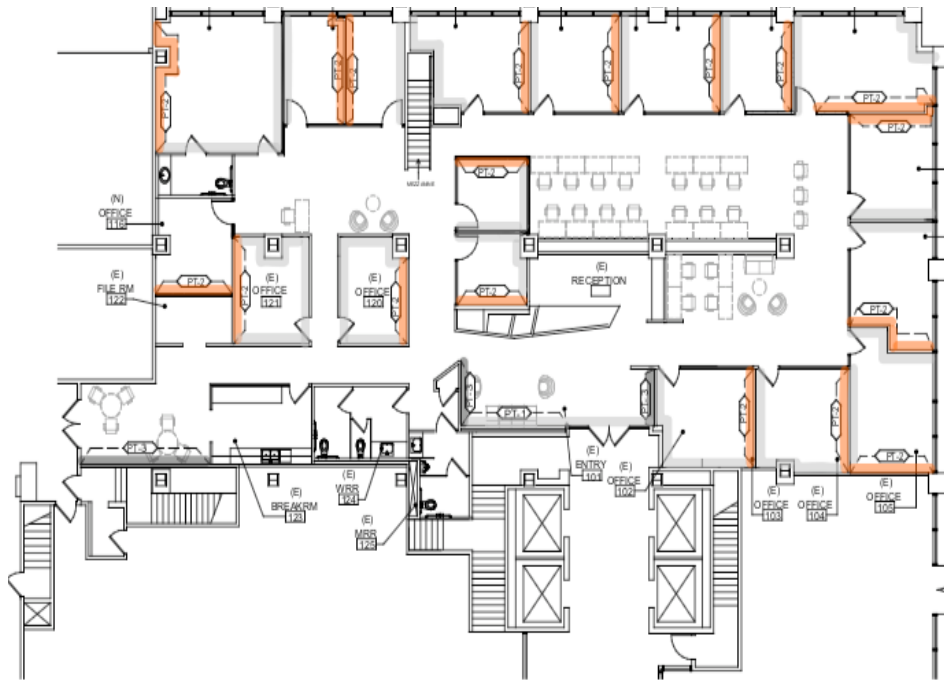
JOE REMARCKE | Vice President | License No. 01957922 | 213 861 3387 | joseph.remarcke@colliers.com

COLLIERS INTERNATIONAL | 865 S Figueroa Street Suite 3500 | Los Angeles, CA 90017 | 213 627 1214 | www.colliers.com

2ND FLOOR >>



1ST FLOOR >>



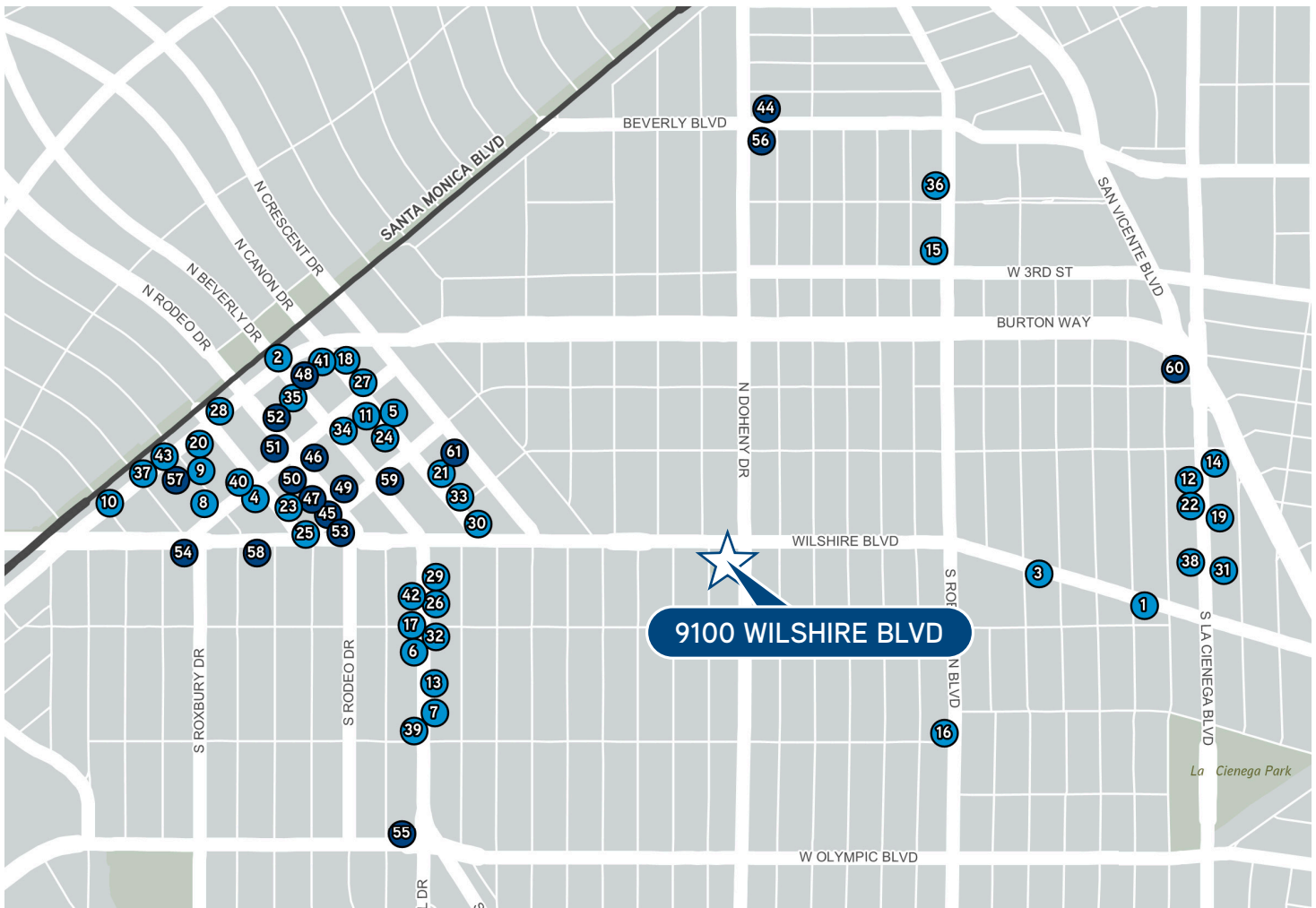
NATHAN PELLOW | Executive Vice President | License No. 01215721 | 213 532 3213 | nathan.pellow@colliers.com

JOE REMARCKE | Vice President | License No. 01957922 | 213 861 3387 | joseph.remarcke@colliers.com

COLLIERS INTERNATIONAL | 865 S Figueroa Street Suite 3500 | Los Angeles, CA 90017 | 213 627 1214 | www.colliers.com



NEARBY AMENITIES



FOOD/DRINK

- | | | |
|-----------------------------|----------------------------------|------------------------|
| 1 Afghani Kabob House | 18 La Scala | 35 The Farm |
| 2 Alfred Coffee | 19 Lawry's | 36 The Ivy |
| 3 Bombay Palace | 20 Le Pain Quotidien | 37 The Nosh |
| 4 Brighton Coffee Shop | 21 Mastro's Steakhouse | 38 The Stinking Rose |
| 5 Caffè Roma | 22 Matsuhisa | 39 Urth Caffè |
| 6 California Pizza Kitchen | 23 Mr Chow | 40 Villa Blanca |
| 7 Chipotle | 24 Mulberry Street Pizzeria | 41 Wally's |
| 8 Comoncy | 25 Ocean Prime | 42 Walter's Café |
| 9 Crustacean | 26 Piccolo Paradiso | 43 Yazawa Japanese BBQ |
| 10 Da Pasquale Trattoria | 27 Shiki | |
| 11 E Baldi | 28 Soom Soom Fresh Mediterranean | |
| 12 Fogo de Chao | 29 South Beverly Grill | |
| 13 Frida Mexican Cuisine | 30 Spago | |
| 14 Genwa | 31 Spice Affair | |
| 15 Georgetown Cupcake | 32 Starbucks | |
| 16 Greendoor | 33 Sugarfish | |
| 17 Kreation Organic Juicery | 34 The Cheesecake Factory | |

RETAIL/MARKET

- 44 Bristol Farms
- 45 Burberry
- 46 Cartier
- 47 COACH
- 48 Crate and Barrel
- 49 DOLCE & GABBANA
- 50 Gucci
- 51 GUESS
- 52 Hermès
- 53 Louis Vuitton
- 54 Neiman Marcus
- 55 Pavilions
- 56 Ralphs
- 57 Rite Aid
- 58 Saks Fifth Avenue
- 59 Sephora
- 60 Trader Joe's
- 61 Whole Food